

INSERT GROOVERS ADJUSTABLE ANGLE

ADJUSTABLE WIDTH GROOVERS Our adjustable groovers come complete with spurs for smooth cutting with and across the grain. Spacers supplied with the tool allow for fine adjustment of grooves up to 1-1/4" deep. Depth varies from 1-1/4" to 1-3/8."



IG660 to IG666

DIA.	BORE	INSERTS	INSERT NO.	SPURS	SPURS NO.	MIN-MAX CUT	CAT. NO.	PRICE
180mm	1-1/4"	8	INKS418	4	INKS410	4mm to 7.5mm	IG660	\$475.00
180mm	1-1/4"	8	INKS418	4	INKS410	4mm to 7.5mm	IG660A*	\$525.00
160mm	1-1/4"	4	INKS207	4	INKS414	8mm to 15mm	IG662	\$395.00
160mm	1-1/4"	4	INKS412	4	INKS414	12.5mm to 24mm	IG664	\$425.00
160mm	1-1/4"	4	INKS215	4	INKS414	16mm to 30mm	IG666	\$469.00

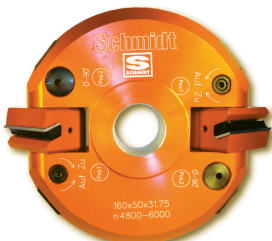
NEW!



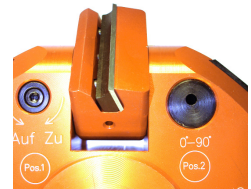
IG660A

* IG660A. Unlike the other models, this one adjusts at the turn of a dial. Infinitely adjustable from 4mm to 7.5mm. There is no quicker way to adjust the width to match material thickness.

ADJUSTABLE ANGLE CUTTER This is the most versatile indexable angle cutter available. Infinitely adjustable using an allen key from -90° to +90° with a vernier scale for accurate adjustment. This unit uses standard 50mm double sided solid carbide inserts.



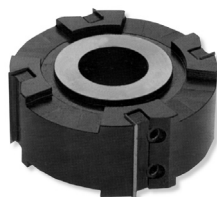
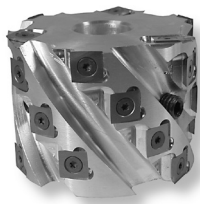
DIA.	BORE	INSERTS	INSERT	KERF	CAT. NO.	PRICE
160mm	1-1/4"	2	INKS250	50mm	IT35160	\$599.00



**Save 10% off the above tools
Offer good until August 31, 2018**

Check out some of our other Insert Style Tools

- Tenon Heads •
- Stackable Surfacing Heads •
- Rebating Cutters •
- Fixed Width Groovers •



For a complete list of all of our woodworking tools and accessories see **OUR NEW CATALOG No. 1200**

CHARLES G. G. SCHMIDT & CO., INC.
301 WEST GRAND AVENUE, MONTVALE, NEW JERSEY 07645
Toll Free Order Line
1 800-SCHMIDT (724-6438)

